

TECHNO RAINBOW FULL COLOR LED DISPLAY SYSTEM

15mm INDOOR/OUTDOOR LED DISPLAY

- ▶ Purpose designed to create maximum impact indoors and outdoors
- ▶ Dual use for rental/event and fixed installation
- ▶ 15mm pixels for brilliant images and vivid color

**PORTABLE • STACKABLE • LOW POWER • LIGHTWEIGHT
VERSATILE • SIMPLIFIED CABLING • EASY MAINTENANCE**



Modular indoor



Modular outdoor

▶ MODULE SPECIFICATIONS

LED Pixels	15 mm pitch - Oval Lamp 1R2G1B LEDs
Brightness	5,000 cd/m ²
Display Colors	approximately 1 billion colors
Image Depth	approximately 1,024 steps
Viewing Angle	160Deg "(H),+15,-45 Deg(V)"
Pixel Number	32 (H) x 32 (V)
Display Size	480 x 480 mm (18.9" x 18.9") = 0.23m ² (2.5 ft ²) (26.7 inches diagonally)
Weight	12.5Kg (27.6 lbs)
Power Consumption	230 Watt (100% light output); 80 Watt (25% light output)
Power Supply	AC100V ~ 240V single phase



Big screen solutions
for the 21st Century

TECHNO RAINBOW FULL COLOR LED DISPLAY SYSTEM

POSSIBLE SCREEN SIZE EXAMPLES

INCH DIAGONAL	H x V (mm)		H x V (ft.)		PIXELS H x V		SCREEN AREA (m ²) (ft. ²)		NUMBER OF MODULES H x V			TOTAL MODULES	ASPECT RATIO	POWER (Watts) Max / Average	WEIGHT Kg Lbs	
	H	V	H	V	H	V	m ²	ft. ²	H	V	H				Lbs	
26.7	480	480	1.57	1.57	32	32	0.23	2.5	1	1	1	1.00:1(4:3)	230/80	12.5	27.6	
148	2,880	2,400	9.45	7.87	192	160	6.91	74.4	6	5	30	1.20:1(4:3)	6,900/2,400	375	828	
178	3,840	2,400	12.60	7.87	256	160	9.22	99.2	8	5	40	1.60:1(16:9)	9,200/3,200	500	1,104	
237	5,280	2,880	17.32	9.45	352	192	15.21	163.7	11	6	66	1.83:1(16:9)	15,180/5,280	825	1,821	
242	4,800	3,840	15.75	12.60	320	256	18.43	198.4	10	8	80	1.25:1(4:3)	18,400/6,400	1,000	2,208	
288	6,240	3,840	20.47	12.60	416	256	23.96	257.9	13	8	104	1.62:1(16:9)	23,920/8,320	1,300	2,870	
283	5,760	4,320	18.90	14.17	384	288	24.88	267.8	12	9	108	1.33:1(4:3)	24,840/8,640	1,350	2,980	
347	7,680	4,320	25.20	14.17	512	288	33.18	357.1	16	9	144	1.77:1(16:9)	33,120/11,520	1,800	3,974	
336	6,720	5,280	22.05	17.32	448	352	35.48	381.9	14	11	154	1.27:1(4:3)	35,420/12,320	1,925	4,249	
378	7,680	5,760	25.20	18.90	512	384	44.24	476.2	16	12	192	1.33:1(4:3)	44,160/15,360	2,400	5,298	
415	9,120	5,280	29.92	17.32	608	352	48.15	518.3	19	11	209	1.72:1(16:9)	48,070/16,720	2,613	5,767	
472	9,600	7,200	31.50	23.62	640	480	69.12	744.0	20	15	300	1.33:1(4:3)	69,000/24,000	3,750	8,278	
484	7,680	9,600	25.20	31.50	512	640	73.73	793.6	16	20	320	0.8:1-	73,600/25,600	4,000	8,830	
605	12,000	9,600	39.37	31.50	800	640	115.20	1,240.0	25	20	500	1.25:1(4:3)	115,000/40,000	6,250	13,797	
762	16,800	9,600	55.12	31.50	1,120*	640*	161.28	1,736.0	35	20	700	1.75:1(16:9)	161,000/56,000	8,750	19,316	

* TR2015X supports up to 16 columns x 20 rows by one TRCL1050 + without accessories

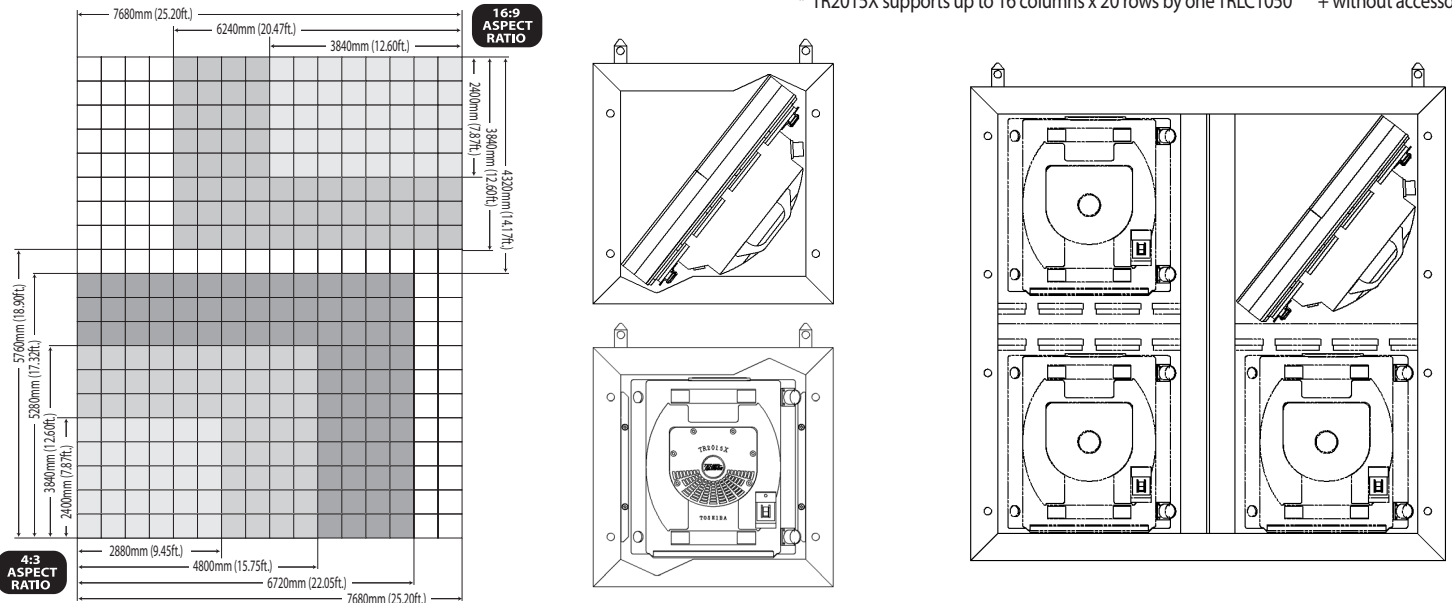
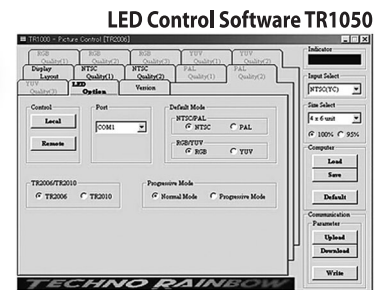


IMAGE PROCESSING SYSTEM SPECIFICATIONS

Input Signal	HD-SDI/STD-SDI/DVI-D (progressive only; looping)
Output Signal	100base-T (TR-link original) (100m max.) Up to 832 x 640 pixels, 1.0 frame delay
Control	Screen configuration Screen ON/OFF, Brightness, Test Pattern Input Signal, Color Preset, Scaling 25% ~ 200%
Dimension	430mm(17")W x 100mm(4")H (2U)
Power Supply	AC100V ~ 240V single phase



TRCL1050



LED Control Software TR1050

JAPAN HEADQUARTERS
Display Media Overseas Department
 Tokyo, Japan
 PHONE: +81-42-335-6715
 FAX: +81-42-354-3488
 E-MAIL: technorainbow@technorainbow.com

NORTH AMERICAN HEADQUARTERS
Toshiba International Corp.
 Houston, Texas, USA
 PHONE: (800) 231-1412
 FAX: (713) 466-8773
 www.toshiba.com
 E-MAIL: LEDsales@tic.toshiba.com

EUROPEAN SALES
Display Knowledge
 Somerset, United Kingdom
 PHONE: + 44 1458 253250
 E-MAIL: info@displayknowledge.com